






Body Bits

Aim:

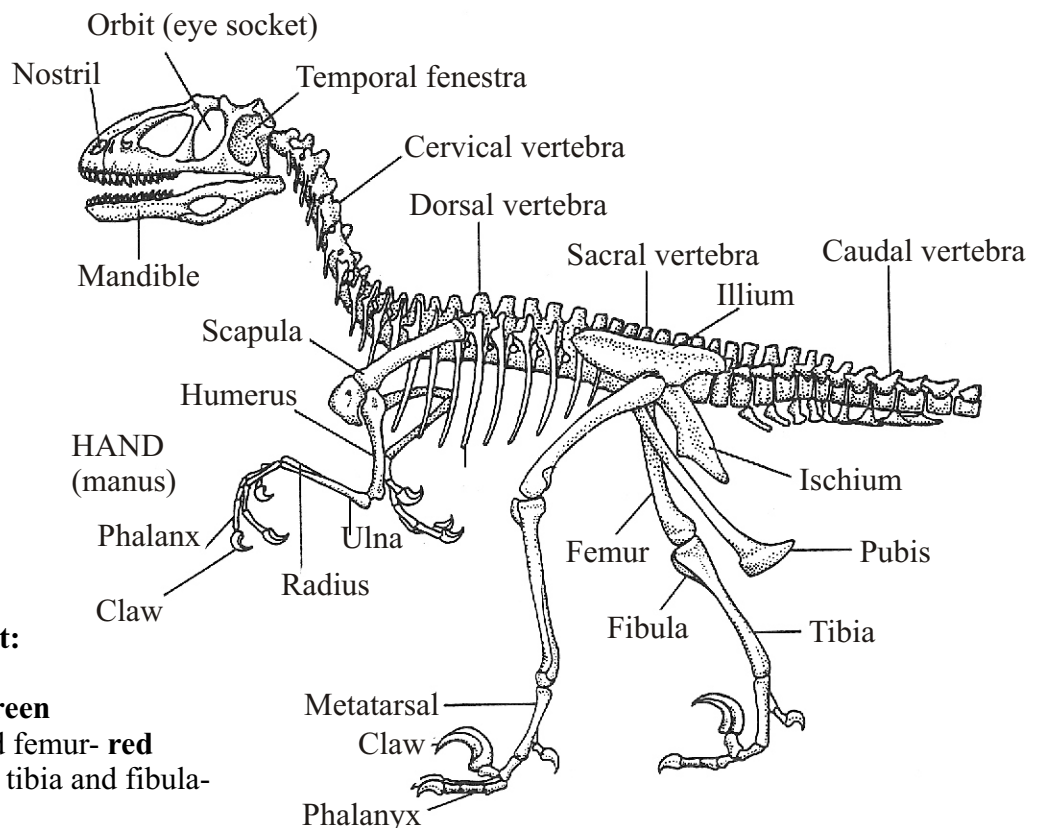
To use the student' knowledge of bones in the vertebrate body to construct a model dinosaur.

Equipment:

-  Cut-out dinosaur jigsaw
-  Scissors
-  Glue
-  Piece of plain paper
-  Coloured pencils or textas

Procedure:

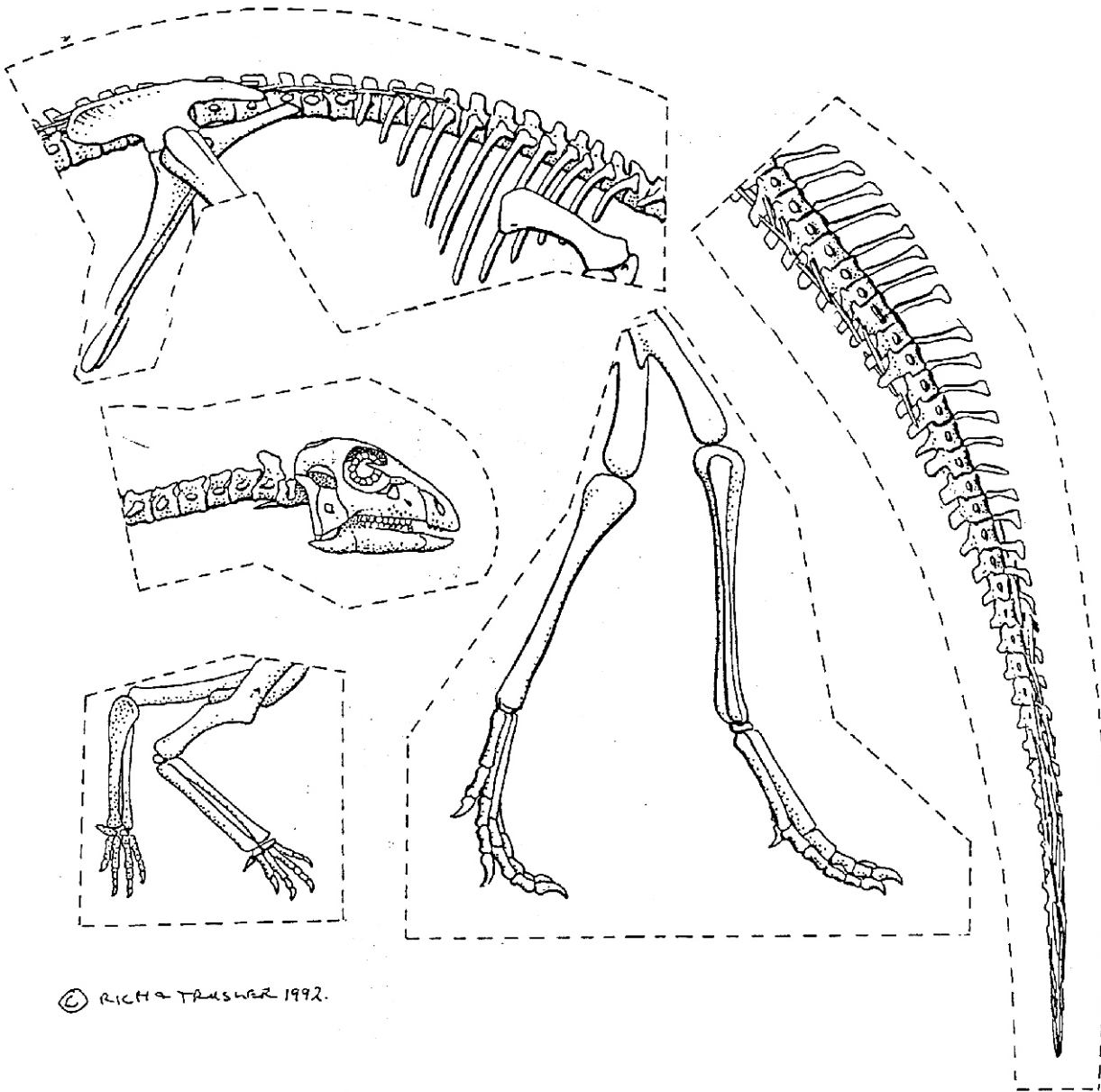
1. Cut around the bones of the dinosaur, work out where the bones should go and put the bone jigsaw together. Glue the pieces on to the piece of paper so that they will make a picture and label the jigsaw with the name of the dinosaur.
2. Colour the different bones of the dinosaur on the back of this page. Use the labelled



Colour chart:

- Vertebrae- **green**
- Humerus and femur- **red**
- Ulna, radius, tibia and fibula- **yellow**
- Skull and jaws- **blue**
- Phalanges (bones of the fingers and toes)- **orange**
- Neck and tail- **pink**
- Ribs- **black**

Leaellynasaura Jigsaw Puzzle



© RICHARD TRUSLER 1992.